

# CHILD CRIMINAL EXPLOITATION

There are children and young people who are being exploited by gangs involved in drug crimes. County line gangs use children and vulnerable young people to courier drugs and money.

## Some of the warning signs include:



Persistent and unexplained absence from school or home



Unexplained possession of money, electronics or clothing



Receiving excessive messages, texts or phone calls



Relationships with gang members or older individuals



Leaving their home suddenly without explanation



Unexplained injuries from self-harm or physical abuse



Parents or caregivers have numerous concerns



Dramatic decline in academic performance



Negative changes in mental health and wellbeing

## GANG TERMINOLOGY

**Air** - Ignore

**Allow it** - Stop it

**Bait** - Easy to get caught

**Bare** - Lots of

**Beef** - Trouble

**Burner** - Cheap phone

**Ends** - Home area

**Food** - Drugs

**Merk** - Murder

**Nitty/Sket** - Derogatory name for women/girls

**On fleek** - Perfect

**PS** - Money

**Pagan** - Person who moves between gangs

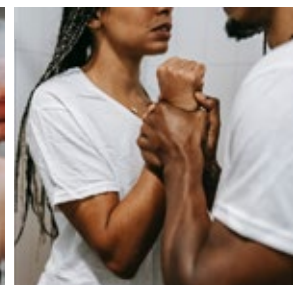
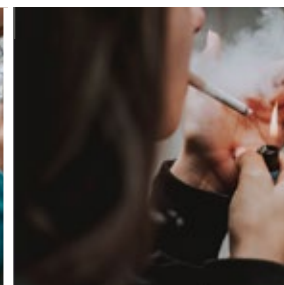
**Shank** - Knife, stabbing

**Shook** - Nervous, scared

**Slipping** - Being in the wrong area, not prepared

**Strap** - Gun

**Whip** - Car



For information on child criminal exploitation visit:  
[thesafeguardingcompany.com/CCE](https://thesafeguardingcompany.com/CCE)